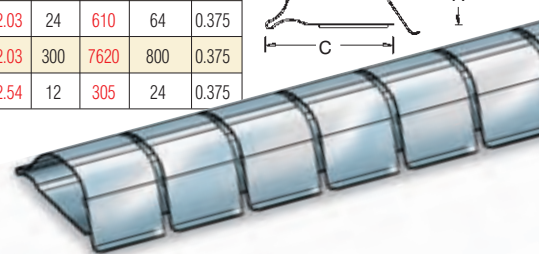
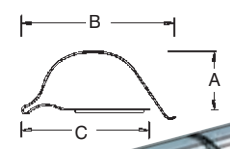




Folded Series

Leader Tech's Folded Gasket series are industry standard general-purpose gaskets that allow a large range of deflection and compression forces. These gaskets are available with or without tape for alternate attachment methods. Also available in a snag-free version where, under compression, the leading edge of the gasket slides into an extended and folded base which prevents possible damage to the gasket.

FS Folded		Black = inches Red = mm																		
P/N	A	B	Finger	Pitch	Mat. Thick	C	Comp Length	Comp Height	Length	Fingers	Tape									
11-28-FS-XX-16	0.11	2.79	0.28	7.11	0.170	4.32	0.188	4.78	0.003	0.076	0.24	5.842	0.37	9.4	0.065	1.65	16	406	85	0.145
11-S-28-FS-XX-16	0.11	2.79	0.28	7.11	0.170	4.32	0.188	4.78	0.002	0.050	0.24	5.842	0.37	9.4	0.065	1.65	16	406	85	0.145
14-37FS-XX-16	0.14	3.56	0.36	9.14	0.228	5.79	0.250	6.35	0.003	0.076	0.32	7.874	0.50	12.7	0.070	1.78	16	406	64	0.200
14-37FS-XX-300	0.14	3.56	0.36	9.14	0.230	5.84	0.250	6.35	0.003	0.076	0.32	7.874	0.50	12.7	0.070	1.78	300	7620	1200	0.200
14-S-37FS-XX-16	0.14	3.56	0.36	9.14	0.228	5.79	0.250	6.35	0.002	0.050	0.31	7.874	0.50	12.7	0.070	1.78	16	406	64	0.200
23-60FS-XX-24	0.23	5.84	0.60	15.24	0.343	8.71	0.375	9.53	0.004	0.102	0.50	12.700	0.77	19.6	0.040	1.02	24	610	64	0.250
23-S-60FS-XX-24	0.23	5.84	0.60	15.24	0.343	8.71	0.375	9.53	0.003	0.076	0.50	12.700	0.77	19.6	0.040	1.02	24	610	64	0.250
25-78FS-XX-24	0.25	6.35	0.78	19.81	0.335	8.51	0.375	9.53	0.005	0.127	0.53	13.462	0.94	23.9	0.080	2.03	24	610	64	0.375
25-78FS-XX-300	0.25	6.35	0.78	19.81	0.340	8.64	0.375	9.53	0.005	0.127	0.53	13.462	0.94	23.9	0.080	2.03	300	7620	800	0.375
25-S-78FS-XX-24	0.25	6.35	0.78	19.81	0.335	8.51	0.375	9.53	0.003	0.076	0.53	13.462	0.94	23.9	0.080	2.03	24	610	64	0.375
25-S-78FS-XX-300	0.25	6.35	0.78	19.81	0.335	8.51	0.375	9.53	0.003	0.076	0.53	13.462	0.94	23.9	0.080	2.03	300	7620	800	0.375
41-113FS-XX-12	0.41	10.41	1.13	28.78	0.460	11.68	0.500	12.57	0.007	0.178	0.80	20.320	1.94	49.3	0.100	2.54	12	305	24	0.375

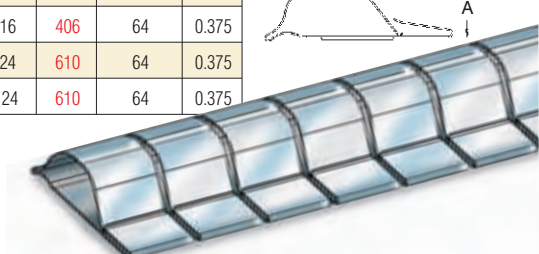
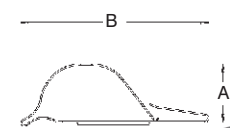


- MOUNTING OPTIONS**
- Tape
 - Solder
 - Rivet

The Leader Tech FS gaskets are industry standard general-purpose gaskets that allow a large range of deflection and compression forces. These gaskets are available without tape for alternate attachment methods. Consult factory for information.

XX - Select material/finish (see page 16)

FSC Folded		Black = inches Red = mm												
P/N	A	B	Finger	Pitch	Mat. Thick	Length	Fingers	Tape						
11-37FSC-XX-16	0.11	2.79	0.375	9.5	0.170	4.3	0.188	4.8	0.003	0.076	16	406	85	0.250
11-S-37FSC-XX-16	0.11	2.79	0.375	9.5	0.170	4.3	0.188	4.8	0.002	0.050	16	406	85	0.250
14-51FSC-XX-16	0.14	3.56	0.510	13.0	0.228	5.8	0.250	6.4	0.003	0.076	16	406	64	0.375
14-S-51FSC-XX-16	0.14	3.56	0.510	13.0	0.228	5.8	0.250	6.4	0.002	0.050	16	406	64	0.375
23-76FSC-XX-24	0.23	5.84	0.760	19.3	0.343	8.7	0.375	9.5	0.004	0.102	24	610	64	0.375
23-S-76FSC-XX-24	0.23	5.84	0.760	19.3	0.343	8.7	0.375	9.5	0.003	0.076	24	610	64	0.375



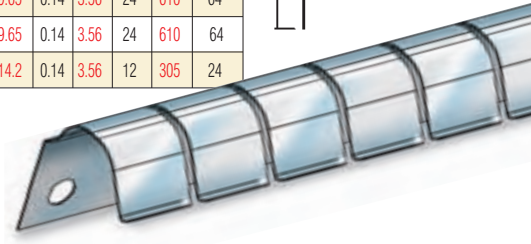
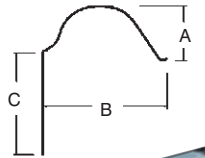
- MOUNTING OPTIONS**
- Tape
 - Solder
 - Rivet

The FSC was created to provide snag free gaskets with FS gasket features. The base of the gasket is extended from the mounting area and then folded up, over, down, and then comes to rest over the leading edge of the formed spring. Under compression, the leading edge of the gasket slides under and is "captured." This "no snag" feature is also used to prevent possible gasket damage.

XX - Select material/finish (see page 16)

Folded Series [cont.]

FSV Folded		Black = inches Red = mm Comp = Compressed																															
P/N	A	B	Finger	Pitch	Mat. Thick	Comp Width	Comp Height	C	Hole Spacing	Hole Diameter	Length	Fingers																					
11-28FSV23-XX-16	0.11	2.8	0.28	7.1	0.170	4.3	0.188	4.8	0.003	0.076	0.37	9.4	0.065	1.65	0.24	6.1	0.80	20.3	0.06	1.52	16	406	85										
11-S-28FSV23-XX-16	0.11	2.8	0.28	7.1	0.170	4.3	0.188	4.8	0.002	0.051	0.37	9.4	0.065	1.65	0.24	6.1	0.80	20.3	0.06	1.52	16	406	85										
14-37FSV30-XX-16	0.14	3.6	0.37	9.4	0.228	5.8	0.250	6.4	0.003	0.076	0.50	12.7	0.070	1.78	0.32	8.1	0.80	20.3	0.06	1.52	16	406	64										
14-S-37FSV30-XX-16	0.14	3.6	0.37	9.4	0.228	5.8	0.250	6.4	0.002	0.051	0.50	12.7	0.070	1.78	0.32	8.1	0.80	20.3	0.06	1.52	16	406	64										
23-60FSV50-XX-24	0.23	5.8	0.60	15.2	0.343	8.7	0.375	9.5	0.004	0.097	0.77	19.6	0.040	1.02	0.50	12.7	0.31	7.87	0.08	2.03	24	610	64										
23-S-60FSV50-XX-24	0.23	5.8	0.60	15.2	0.343	8.7	0.375	9.5	0.002	0.051	0.77	19.6	0.040	1.02	0.50	12.7	0.31	7.87	0.08	2.03	24	610	64										
25-78FSV50-XX-24	0.25	6.4	0.78	19.8	0.335	8.5	0.375	9.5	0.005	0.127	0.94	23.9	0.080	2.03	0.50	12.7	0.38	9.65	0.14	3.56	24	610	64										
25-S-78FSV50-XX-24	0.25	6.4	0.78	19.8	0.335	8.5	0.375	9.5	0.003	0.076	0.94	23.9	0.080	2.03	0.50	12.7	0.38	9.65	0.14	3.56	24	610	64										
41-113FSV-XX-12	0.41	10.41	1.13	28.70	0.460	11.68	0.500	12.7	.007	0.178	0.750	19.05	0.38	9.65	0.80	20.32	0.56	14.2	0.14	3.56	12	305	24										

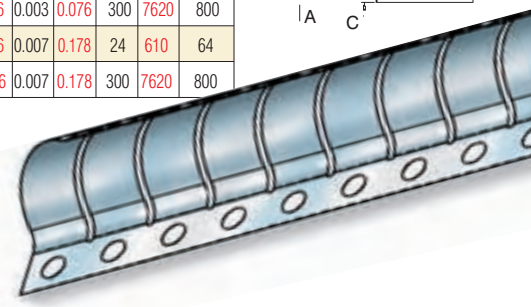
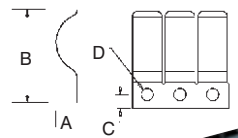


- MOUNTING OPTIONS**
- Tape
 - Rivet
 - Weld
 - Solder

The FSV is an FS gasket that has the base bent at a right angle to the curve of the spring form, with all the other features of the FS gasket maintained. Tape optional - please consult factory.

XX - Select material/finish (see page 16)

FSDS Folded		Black = inches Red = mm Comp = Compressed																													
P/N	A	B	Finger	Pitch	Comp Width	Comp Height	C	D	Mat. Thick	Length	Fingers																				
25-109FSDS-XX-24	0.25	6.4	1.09	27.7	0.335	8.5	0.375	9.5	1.27	32.26	0.08	2.03	0.16	4.06	.140	4.06	0.005	0.127	24	610	64										
25-109FSDS-XX-300	0.25	6.4	1.09	27.7	0.335	8.5	0.375	9.5	1.27	32.26	0.08	2.03	0.16	4.06	.140	4.06	0.005	0.127	300	7620	800										
25-S-109FSDS-XX-24	0.25	6.4	1.09	27.7	0.335	8.5	0.375	9.5	1.27	32.26	0.08	2.03	0.16	4.06	.140	4.06	0.003	0.076	24	610	64										
25-S-109FSDS-XX-300	0.25	6.4	1.09	27.7	0.335	8.5	0.375	9.5	1.27	32.26	0.08	2.03	0.16	4.06	.140	4.06	0.003	0.076	300	7620	800										
41-163FSDS-XX-24	0.41	10.4	1.63	41.4	0.460	11.7	0.500	12.7	1.9	48.26	0.10	2.54	0.19	4.83	.140	3.56	0.007	0.178	24	610	64										
41-163FSDS-XX-300	0.41	10.4	1.63	41.4	0.460	11.7	0.500	12.7	1.9	48.26	0.10	2.54	0.19	4.83	.140	3.56	0.007	0.178	300	7620	800										



- MOUNTING OPTIONS**
- Tape
 - Rivet
 - Weld
 - Solder

The FSDS is an FS gasket with its base lying on the same plane as the curve in the spring form, with the mounting area shortened. This mounting is often modified for custom applications.

XX - Select material/finish (see page 16)